

Liver Transplant Panel

Carl Berg, MD (Duke)

Jama Darling, MD (UNC)

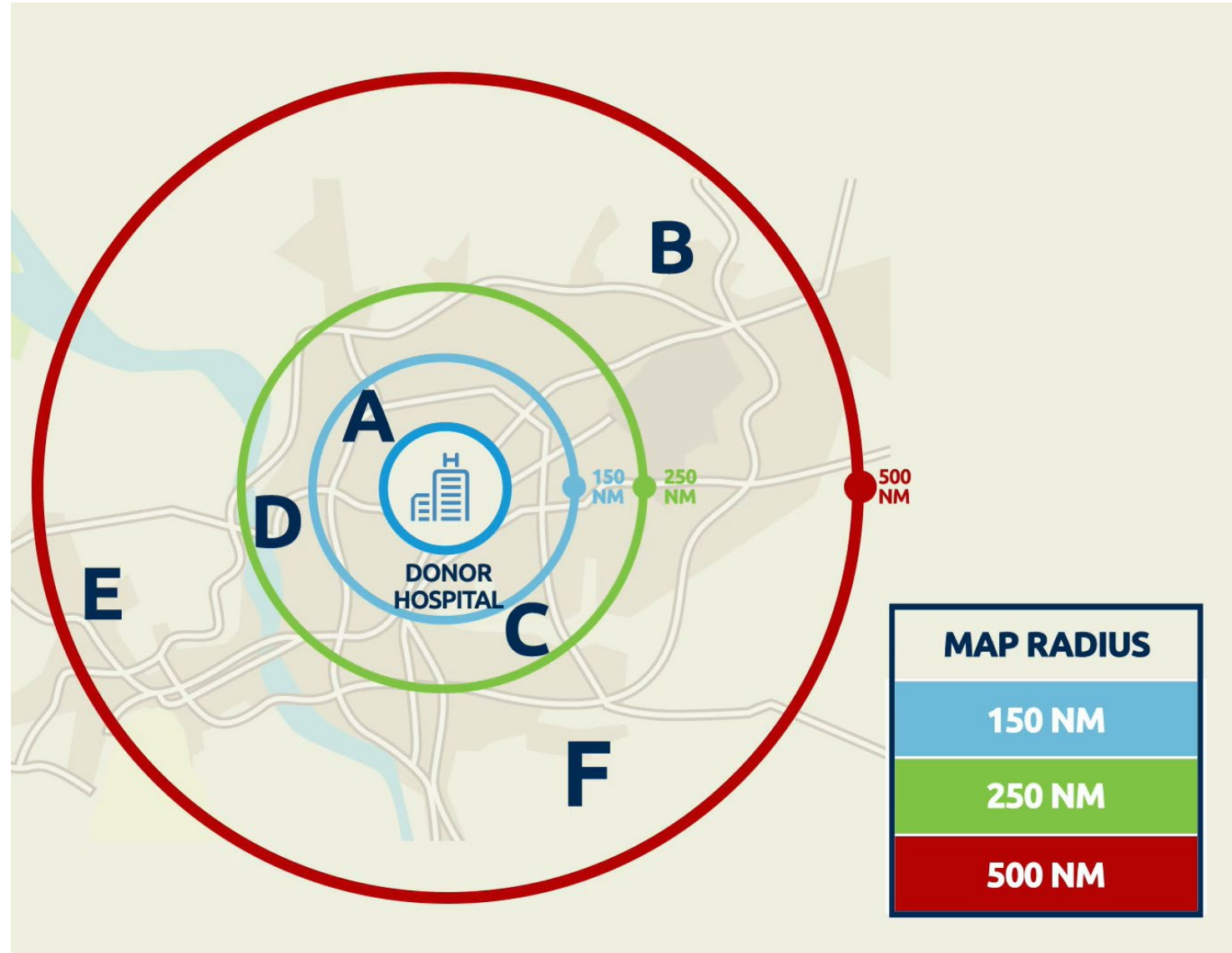
Mark Russo, MD (Atrium)



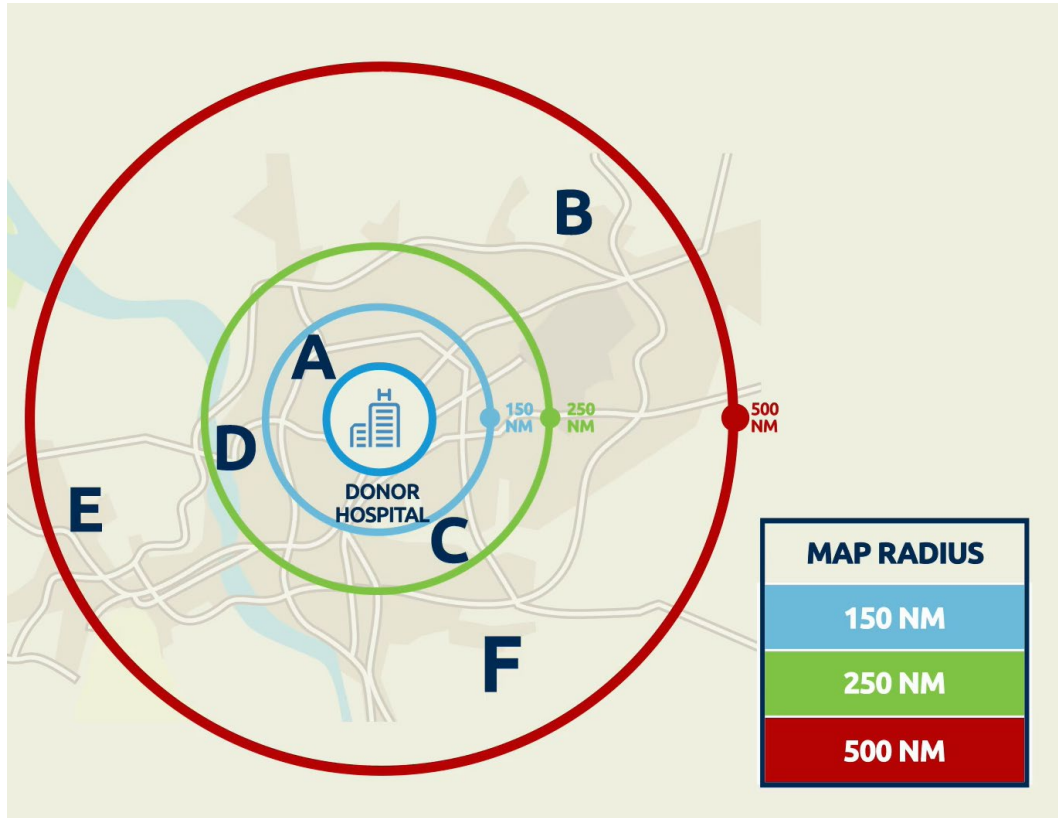
Case #1

- 53 year old presents with cirrhosis from NAFLD with variceal hemorrhage, ascites and hepatic encephalopathy
- Listed for liver transplantation December 2019
- Labs
 - Sodium: 130 meq/L
 - Total bili: 4 mg.dL
 - Creatinine: 1.3 mg/dL
 - PT-INR: 1.8
 - MELD-Na: 25

As of 2/4/2020



Circles...



Transplant candidate	Candidate center is within radius of donor hospital (nautical miles)
Status 1A and 1B	500
MELD \geq 37	150
MELD \geq 37	250
MELD \geq 37	500
MELD 33-36	150
MELD 33-36	250
MELD 33-36	500
MELD 29-32	150...250...500
MELD 15-28	150...250...500

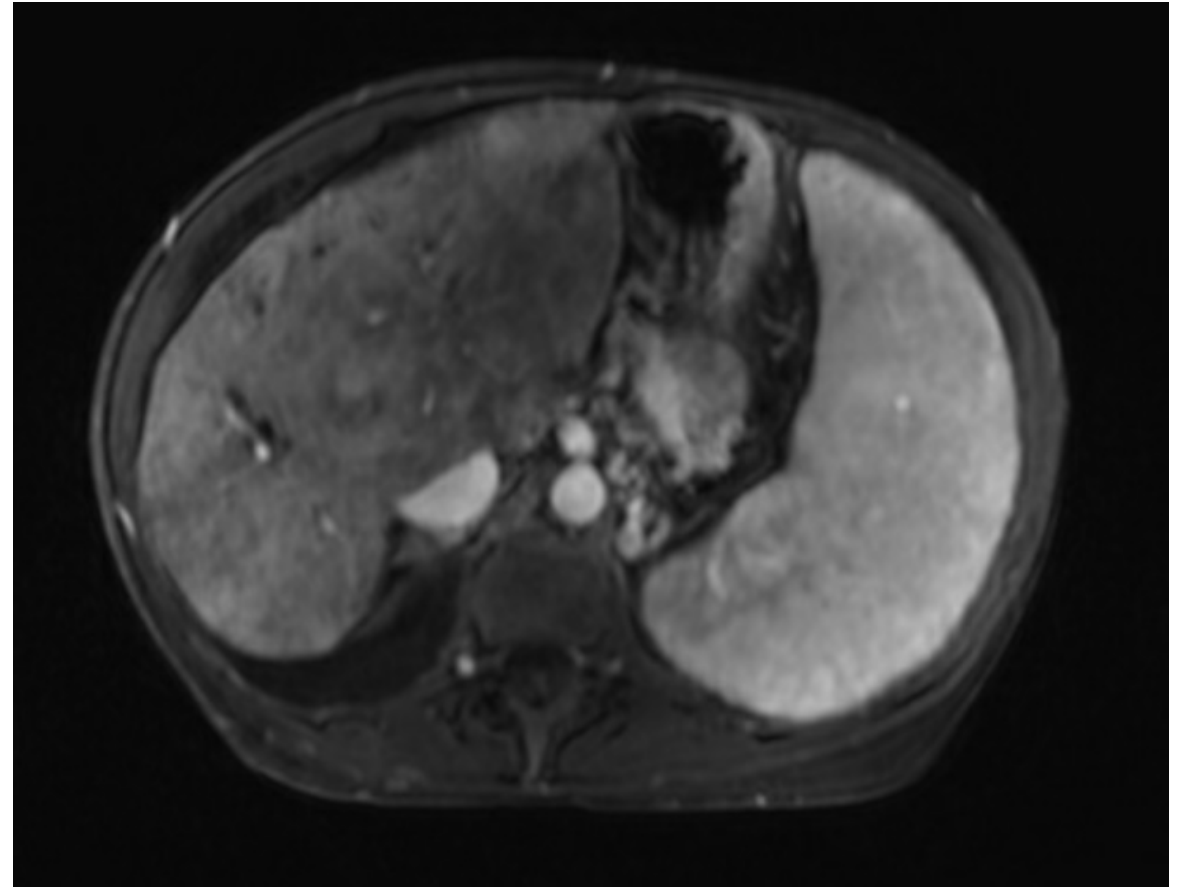
Case #1

- 53 year old presents with cirrhosis from NAFLD with variceal hemorrhage, ascites and hepatic encephalopathy
- Listed for liver transplantation December 2019
- Labs
 - Sodium: 130 meq/L
 - Total bili: 4 mg.dL
 - Creatinine: 1.3 mg/dL
 - PT-INR: 1.8
 - MELD-Na: 25

Transplant candidate	Candidate center is within radius of donor hospital (nautical miles)
Status 1A and 1B	500
MELD \geq 37	150
MELD \geq 37	250
MELD \geq 37	500
MELD 33-36	150
MELD 33-36	250
MELD 33-36	500
MELD 29-32	150...250...500
MELD 15-28	150...250...500

Case #2

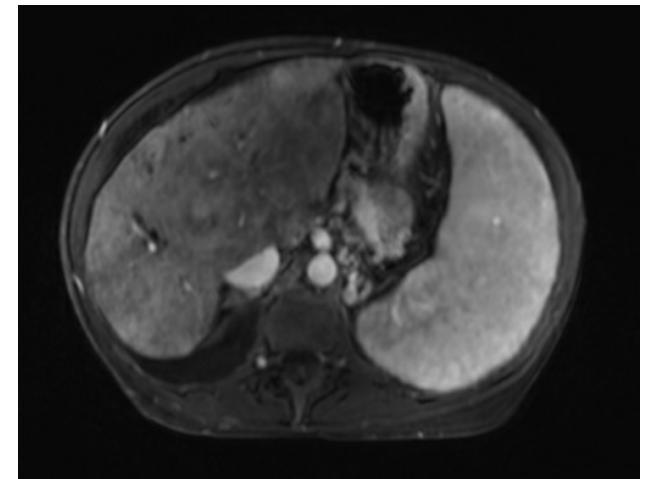
- 55 year old presents with cirrhosis from NAFLD is enrolled in surveillance program, and this reveals HCC.
 - MRI abdomen: 1.2 cm LI-RADS-5 lesion in the segment II
 - Chest CT: no mets
 - AFP: 218 ng/ml
- EGD: small varices
- No history of ascites, encephalopathy



Case #2

- 55 year old presents with cirrhosis is enrolled in surveillance program, and this reveals HCC.
 - MRI abdomen:
 - 1.2 cm LI-RADS-5 lesion in the segment II
 - Splenomegaly, abdominal varices
 - Chest CT: no mets
 - AFP: 218 ng/ml
- EGD: small varices
- No history of ascites, encephalopathy

- Labs
 - Sodium: 136 meq/L
 - Total bili: 1.5 mg.dL
 - Creatinine: 1.3 mg/dL
 - PT-INR: 1.3
 - Platelets: 83,000
 - MELD-Na: 15
 - Blood type O+



Case #3

- 61 year old with cirrhosis from PBC complicated by hepatic encephalopathy and ascites requiring large volume paracentesis
 - Listed for liver transplantation for 3 months
 - MELD-Na ranging 16-18
 - No liver transplant offers
- Labs
 - Sodium: 132 meq/L
 - Total bili: 3.3 mg.dL
 - Creatinine: 0.9 mg/dL
 - PT-INR: 1.2
 - Platelets: 48,000
 - MELD-Na: 17
 - Blood type O+

Case #4

- 23 year old presents with alcoholic hepatitis
- Alcohol history since age 16, daily since age 21
- Marijuana use, no other drug use
- No substance abuse treatment
- Labs
 - Sodium: 131 meq/L
 - Total bili: 18 mg.dL
 - Creatinine: 1.1 mg/dL
 - PT-INR: 2.1
 - Platelets: 190,000
 - MELD-Na: 29
 - Discriminant function: 77
- Treatment:
 - Prednisolone 40 mg daily
- Lille score, day 7:
 - 0.71 (poor prognosis)

Case #5

- 61 year old presents with cirrhosis from NAFLD is listed for liver transplantation and presents for routine visit.
- Surveillance ultrasound today reveals no mass; new thrombus is present in the main portal vein



- Labs
 - Sodium: 136 meq/L
 - Total bili: 3.1 mg.dL
 - Creatinine: 1.1 mg/dL
 - PT-INR: 1.6
 - Platelets: 72,000
 - MELD-Na: 18
 - AFP: 11 ng/ml

Thank you